



CAPABILITY STATEMENT

ALWAYS Listen, **ALWAYS** Solve, **ALWAYS** Achieve

THE SEMPER ADVANTAGE

Semper Environmental is experienced in a wide range of environmental site characterization methods and remedial processes. We respond with science-based, innovative and exceptional performance on every task. Our approach to deeply explore, investigate, comprehend and communicate all aspects of a project leads to a higher level of understanding for all stakeholders and results in cost savings through conflict-free progress and concurrence.

CORE SERVICES

Environmental Investigation / Remediation

- **All Phases** of RCRA (Resource Conservation and Recovery Act), CERCLA (Comprehensive Environmental Response, Compensation and Liability Act), and NEPA (National Environmental Policy Act)
- **Site Investigation** and Remediation for Groundwater, Soil, Soil Vapor & Vapor Intrusion
- **PFAS/PFOA** Sampling and Analyses
- **Environmental Risk Assessments** (Human and Ecological)
- **Phase I and II** Environmental Site Assessments
- **Biological and Cultural Resources** Support

Military Munitions Response

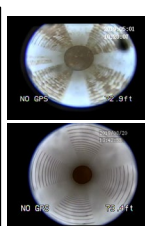
- **All Phases** of MMRP (Military Munitions Response Program; PA/SI; RI/FS; PP/DD; RD/RA)
- **Unexploded Ordnance (UXO)** Field Teams for Investigations, Remediation, Construction Support and Anomaly Avoidance
- **Munitions Constituent (MC)** Contamination in Soil and Groundwater; Incremental Sampling Method (ISM) Sampling
- **Chemical Warfare Materiel (CWM)** Contaminated Sites
- **Geophysical Surveys/Investigations**, including Advanced Classification (through affiliate)

Technical Consulting

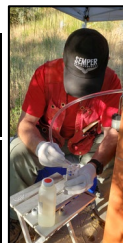
- **Project Management**; planning; contaminant hydrogeology; exceptional technical writing; conceptual site model development; community relations; technical presentations; environmental documents writing & review



FUDS project, Oregon



Mont. Well Rehab Project



Low-flow sampling



Landfill gas sampling

DIFFERENTIATORS

- **20+ years** of industry and federal government experience
- **Proven and experienced** technical team with multifaceted expertise in environmental consulting
- **Solid Network** of known and vetted teaming partner and subcontractor company affiliates, large and small
- **We specialize** in innovation, stakeholder cooperation, and getting the job done

RECENT PAST PERFORMANCE

- Contaminant hydrogeology technical consulting- US Army, Tooele Army Depot, Utah
- Monitoring well video inspection and top-of-casing resurvey- US Army, Dugway Proving Ground, Utah
- MMRP Historical Records Review- Utah National Guard, Eagle Mountain, Utah
- Heavy metal-laden dust wipe sampling, analyses and reporting-Tooele Industrial Park, Utah
- Low-flow groundwater and landfill gas sampling-municipal landfill, Layton, Utah
- Baseline ISM soil investigation- US Army, Tooele Army Depot, North and South Areas, Utah

Additional project past performance and references can be provided upon request. Our excellent project performance has resulted in repeat business from each of the organizations below.



PARSONS



CORPORATE SNAPSHOT

- ✓ **DUNS:** 080790781, **CAGE code:** 7XCD1
- ✓ **UEI:** EN5NDLLPHEN5
- ✓ **NAICS:** 541620, 562910, 541330, 562112, 562211
- ✓ **PSC:** B510, **FSC:** F111, F999



Point of Contact: Jeff Fitzmayer, P.G.
(801) 305-3212

Jfitzmayer@semperrec.com

www.semperenvironmental.com